

Brass Syllabus

Articulation for scales and arpeggios

The various articulation patterns for scales and arpeggios in this syllabus are given on the next page. Scales, arpeggios and exercises for all brass instruments are published by Trinity College London.

A natural minor scale (one octave, tongued)



Chromatic scale on Bb (one octave, slurred)



Diminished 7th on A (two octaves, staccato)



Augmented arpeggio on A (two octaves, tongued)



Whole tone scale on Ab (two octaves, slurred in pairs)



Dominant 7th in the key of Bb (one octave, slurred) [Candidates may choose to finish dominant 7th arpeggios on the tonic, as shown, or the starting note.]



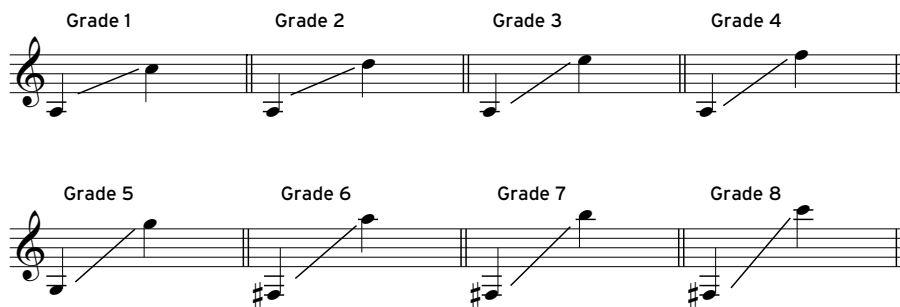
G crabwise scale (slurred in octaves)



Ranges for scales and arpeggios (written pitch)

The ranges given encompass all treble clef technical work set. Pieces may occasionally include isolated and manageable notes outside this range but the majority of music will remain comfortably within it. Trombone ranges are similar, but may differ slightly. Bass clef ranges should be adjusted as appropriate.

Valved Brass



French Horn

